



ARDOR[®]

FIRE & SAFETY SYSTEMS

Think Fire... Think ARDOR..

ARDOR120
2 HOURS FULLY
INSULATED
FIRE DOOR

TESTED AT
IPIRTI- BANGALORE
AS PER
BS 476 PART 22
AND
IS 3614 PART 2



ARDOR120 MgSO4 BOARD

New age medium density
magnesium oxide
Fire board
which takes the
newest formula of Basic
Magnesium Sulfate
Cementitious.



SPECIAL FEATURES OF **ARDOR120 MgSO4 BOARD**

ARDOR 120 MgSO4 Board has achieved its superior strength and flexibility by the introduction of 2-4 layers of alkaline resistant glass fiber mesh. Consistent high quality of the product is maintained and monitored through a sophisticated digitally controlled process to ensure a superior finished board. It has achieved 120 minutes fire resistance when it was used in wooden composite fire door construction and tested at IPIRTI Bangalore.



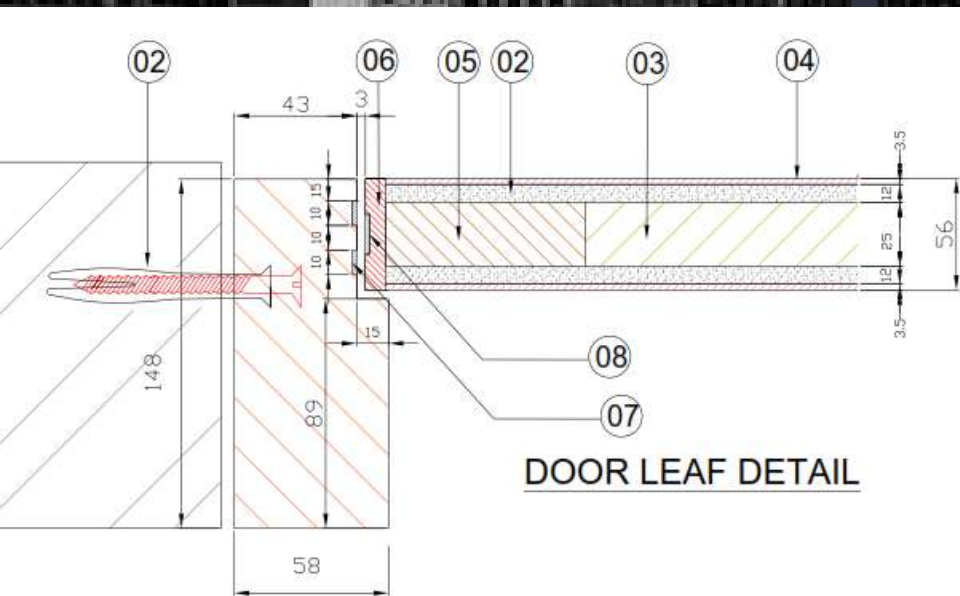
ARDOR120 MgSO4 BOARD SUPERIOR ATTRIBUTES

Attributes	ARDOR120 MgSO4 Board	Gypsum boards	Calcium silica boards
Fire Resistant & Non-Combustible	YES	NO	YES
Water & Moisture Resistant	YES	NO	YES
Mold & Mildew Free	YES	NO	YES
Insect Resistant	YES	NO	YES
Insulation of sound and heat	YES	NO	YES
Recyclable	YES	NO	NO
Light Weight	YES	YES	NO
Environmentally "Green" & Non-Toxic	YES	NO	NO

ARDOR120 2 HOURS FULLY INSULATED FIRE DOOR CONSTRUCTION DETAIL

SPECIFICATION OF ARDOR -120 FIRE RESISTANCE DOORS TESTED AS PER BS 476 PART 20 & 22 / IS 3614 PART 2.

SR.NO.	DESCRIPTION
01	Door frame of Hard Wood Having Minimum density of 600 kg and Frame Section of 148mm X 58mm
02	Ardor-120 (MgSo4) Board on Both Side 12 mm thick
03	In fill Insulation of 25 mm Roxul Rockwool -100 kg Density
04	Plywood Both Side 3.5MM thick- (IS -303)
05	Internal Frame of 100mm x 25mm of hardwood of minimum 600kg Density
06	Hardwood Beading 10MMX56MM
07	Intumescent strip of 10mm x 1.8mm thick (ARDOR FF104E) - 2 Nos on all three side of frame
08	Intumescent Strp of 20mm x 1.8mm thick (ARDOR FF104E) - 1 No on all three side of shutter
09	Anchor Fastener of M10 and 120mm Long
10	4nos Ball bearing butt hinges.Size: 4" x 3" x 3mm Grade SS 304 - Finish SSS (CBH 102- CONSORT MAKE)
11	Mortise Dead Lock (CH7252S- Consort Make) with 80mm Long Cylinder (CH783- Consort Make)
12	Over head Door closer EN -2-4 (CDC 750 - Consort Make)
13	'D' Type SS Pull Handle 300mm X 19 mm dia (CPHH8 - Consort Make)



ARDOR60 1 HOURS FULLY INSULATED FIRE DOOR.

We provide 45 mm thick solid core, architectural grade 1-hour composite wooden finish fire doors for a variety of Residential, commercial and institutional applications, including office buildings, hotels, hospitals, etc.

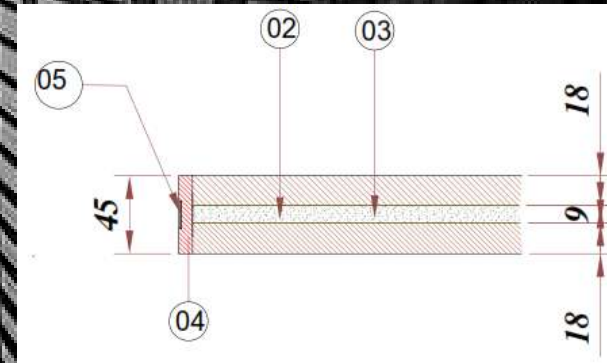
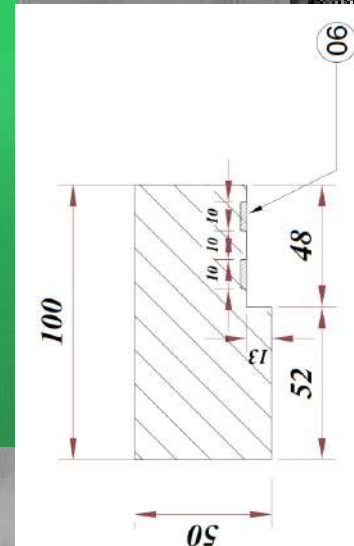
Apart from providing guaranteed protection from heavy fires, these wooden finish doors also lend an aesthetically pleasing appearance. Our doors come in a sleek and attractive design with a frame section of 100mm x 50mm. Also, that they are durable enough to withstand heavy and frequent use. These doors are constructed and tested as per IS 3614 part 2 and BS476 Part 22 at IPIRTI Bangalore.



ARDOR60 1 HOURS FULLY INSULATED FIRE DOOR

TESTED AT
IPIRTI- BANGALORE
AS PER
BS 476 PART 22
AND
IS 3614 PART 2

SR.NO.	DESCRIPTION
01	RED MERANTI FRAME FINISH SIZE 100X50mmwith minimum density of 500 Kg/M3
02	PROMAT (Cement Bound Board) BOARD 9MM THICK
03	PLYWOOD of 18MM THICK as per IS-303 MR GRADE
04	RED MERANTI BEADING 15MMX45MM
05	PROMASEAL INTUMESCENT STRIP 20MM X 2MM THICK ON ALL THREE SIDE OF FRAME
06	PROMASEAL INTUMESCENT STRIP10MM X 2MM THICK ON ALL THREE SIDE OF SHUTTER
07	SS BALL BEARING HINGES 100MM X 75MM X3MM THICK (MAKE STANLEY)
08	DOOR CLOSER OVAL HEAD (MAKE STANLEY)
09	MORTIZE LOCK WITH LEVER HANDLE (MAKE STANLEY)
10	FASTNER-M10-120MM LONG



FIRE RESISTANT STEEL AND GLASS DOORS AND PARTITION SYSTEM

Steel and Glass doors are specially built to contain lethal fumes and deadly fire on one side of the building, protecting the goods on the other side and allowing people to get out safely. Our partnership with M/s. Hörmann, a pioneer in high performance doors provides testimony to our commitment of providing you the highest quality ONLY!



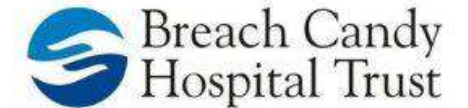


KITCHEN HOOD FIRE SUPPRESSION SYSTEM

- We provide commercial fire suppression systems that provide fire protection in hoods and ducts of cooking appliances. Also, we provide advanced fire extinguishing agents that absorb the heat from the oil and form a blanket, which cuts the supply of oxygen thereby extinguishing the fire completely.



FEW ESTEEMED CLIENTS



THANK YOU

ARDOR FIRE & SAFETY SYSTEMS,
Office #503, 5th Floor,
VIHAN Building, Walbhat Road,
Goregaon - East, Mumbai - 400 063,
Maharashtra, INDIA
Telephone No. +91 22 2088 44 55 / 66
E-mail : dharmesh@ardorfire.com
URL : www.ardorfire.com

*"Fire Safety Big Or Small.....
ARDOR Is For All !!!"*



Fire Rated Wooden Doors



Fire Stopping Systems



Fire Rated Steel Doors



**Kitchen Hood Fire
Suppression Systems**



Fire Rated Glass Doors



**Automatic Fire Curtain
Systems**



Mr. Dharmesh Bramahbhatt



— : ABOUT US : —

Ever since the dawn of the mankind's existence fire has been something that commands respect and fear.

Without fire we cannot survive, however it is also one of the most devastating forces of nature, hence mastering fire has always been important.

A safe building is a good building where fire safety plays an important role.

The risk of fire depends on a building's use, location, size, occupants, design and construction.

In general the bigger the building the greater the risk to life and property and the vital factor in reducing this risk is to provide physical barriers to restrict the spread of fire within the building by dividing it into a series of compartments bounded by the fire resisting walls and floors.

We at ARDOR believe in providing complete solution with end to end service towards fire resistance.

ARDOR is among the 1st associates and are an original equipment manufacturer of wooden fire resistance doors for PROMAT International.

We specialise in fire stopping / barrier system of PROMAT and entire range of passive fire protection system.

ARDOR is manufacturer and end to end system integretor for passive fire protection system with being a complete solution provider for entire range of door system.

ARDOR has conducted successful tests of 120 and 60 minutes wooden finish fire resistance doors at CBRI – Central Building Research Institute and IPIRTI – Indian Plywood Industries Research & Training Institute.

ARDOR team remains committed towards providing a risk free environment around your priced possessions.

AUTHORISED DISTRIBUTOR, DEALER & INSTALLER OF :



ProActive Fire Protection System and OEM of Wooden Finished Fire Door



**SAPPHIRE® Clean Agent Fire Suppression System
R - 102™ PIRANHA® Restaurant Fire Suppression Systems**



Steel & Glass Fire Door System



Fire Curtains Systems



Wooden Fire Door System :

Fire Rated Integrity & Insulated Wooden Finished Doors & Frame :

The Life of a fire door is much more than just a simple open and shut matter of functionality an aesthetics.

Nowadays, reflecting increased concern for sensible Green Building policies, doors have to perform much more efficiently than ever before. In their ordinary life span, fire doors must survive year after year of functional use. In most locations this can also mean extended periods of time of abuse and high wear and tear.

Doors generally and fire doors specifically have to be built tough and durable just to be able to survive intact and functional to the day they are called upon to deliver their stated fire door promise in an actual fire scenario.

Nevertheless, to be considered effective, functional fire doors generally must be able to sustain not only the published fire performance levels of the overall building but also provide same or better fire performance characteristics than the surrounding structural and building components in which the doors are sited.

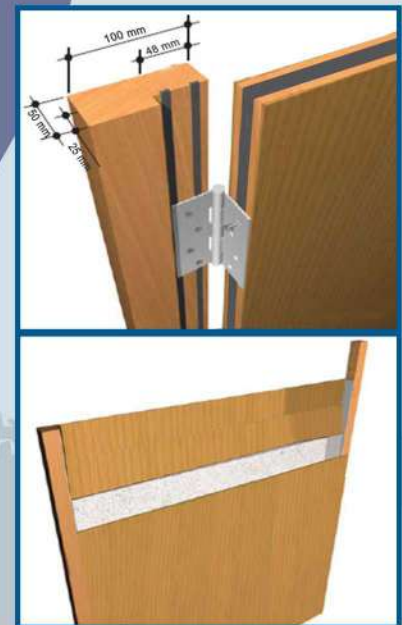


1 Hour Fire Resistance Wooden Finish Doors.

1 Hour composite wooden finish fire door is three layer construction, constructed from 2 nos. of 18mm thick ply as per IS 303 and sandwiched with PROMAT make 9mm matrix engineered fire board.

This door is tested as per IS 3614 part 2 and as per BS 476 Part 22 at IPIRTI Bangalore.

Hard wood having density of more than 450KG / m³ is used for frame with much sleeker frame section of 100mm x 50mm to achieve require aesthetic. This door can further finished with Laminate and Veneer as per architecture of surrounding area.



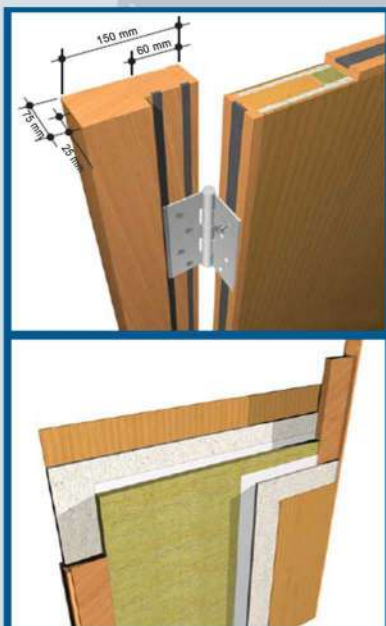
2 Hours Fire Resistance Wooden finish Doors.

2 Hours composite fully insulated wooden finish fire door is five layer construction, constructed from 2 nos. of Promina 60 Boards 9 mm thick with 30mm stiles and rails, filled with Insulation and finally covered with 4mm ply as per IS 303 from both side.

This door is tested as per IS 3614 part 2 and as per BS 476 Part 22 at CBRI - Roorkee and IPIRTI Bangalore.

Hard wood having density of more than 600KG / m³ is used for frame with much stable frame section of 150mm x 75mm to achieve require aesthetic.

This door can further finished with Laminate and Veneer as per Architecture of surrounding area.





STEEL FIRE DOORS

A fire door is a door with a fire-resistance rating used as part of a passive fire protection system to reduce the spread of fire and smoke between separate compartments of a structure and to enable safe egress from a building.

We are associate of M/s. Hörmann, a pioneer in high performance doors across the world and No.1 door brand in Europe.

M/s. Hörmann adopt cutting-edge German technology to design, build and supply doors for industrial, commercial and residential applications.

Tested and certified to comply with highest Indian , British and American Standards they are available with fire resistance for Integrity of 60, 90, 120, 180 and 240 minutes. These doors not only complement the existing passive fire-fighting systems, but also ensure optimal personal safety.

Fire Resistance Glass Door and Partition System

The need for a good and reliable fire protection system in commercial buildings and office complexes has gained significant importance in recent years. While there is no doubt that fire is a symbol of man's development, fire and fire-related hazards can cause heavy loss to life, property and critical data.

Good design practices and safe construction can help prevent fire hazards and make your buildings fire safe. Glazed Partitions and Glazed Fire Doors are high on aesthetics and safety properties and are highly recommended for application in building entrances, lift lobbies, server rooms, and corridors.

Designed to restrict the spread of fire and smoke, they remain clear and transparent during the entire fire thereby allowing fire fighters clear options to rescue endangered lives .These doors not only protect the property and lives, but also add significant value to the visual aesthetic. They are highly flexible, allowing the Architects to create futuristic designs with natural lighting and viewing decks, without compromising on the safety and security.

Tested and certified to comply with highest Indian, British and American Standards they are available with fire resistance up to 120minutes.



Fire Stopping Systems

While fire resisting compartments are created to contain and prevent fire and smoke from spreading within building structures, this also presents a parallel threat as most concealed cavities between fire resisting walls and floors are interlinked.

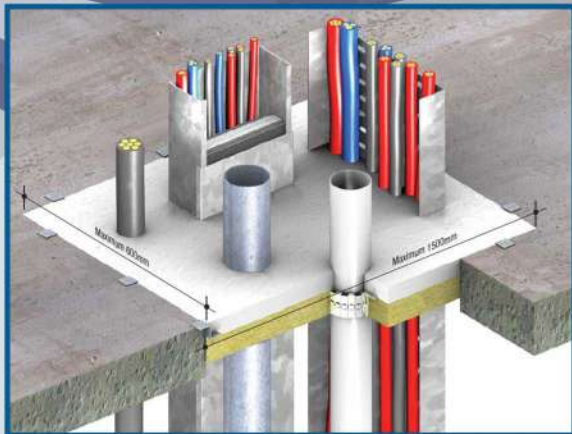
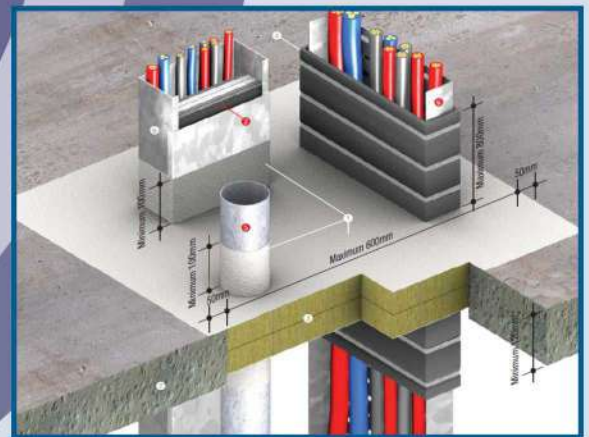
The importance of sealing gaps in this type of construction is therefore vital to ensure compartmentation works to its optimum ability to save life and property. Such gaps are typical at service penetrations through walls and floors, but also include gaps left for structural movement and gas left due to poor workmanship.

Recognizing this, the development of effective solutions to seal gaps at service penetrations has increased over the past few years and with our association with PROMAT who has become a world leader in supplying such solutions we are able to achieve the best deliveries.



Promaseal® Bulkhead System

PROMASEAL® Bulkhead Sealer System is made from high density mineral wool. The mineral wool is coated with PROMASEAL® Bulkhead Sealer, which will remain in place during a fire and form a barrier against fire. It can be used in wall and floor applications and has been tested up to 2 hours to AS 1530: Part 4 and BS 476: Part 20 with various services penetrating the compartment wall.

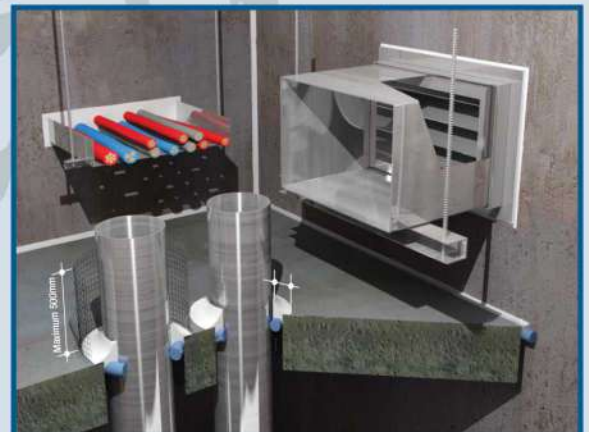


Promastop® Cement System

PROMASTOP® cement is a fire resistant, light weight cement supplied as a pre-mixed dry powder for mixing on site with water. The system will look white in colour for ease of identification and provides up to 4 hour fire rating in masonry or concrete block walls and concrete floors when installed. PROMASTOP® Cement is fire tested to BS 476: Part 20 and AS 1530: Part 4 with reference to prEN 1366: Part 3:1999.

Promaseal® Acrylic Intumescent Sealant

PROMASEAL® Acrylic, Intumescent or silicone based material with excellent adhesive properties for fire resistant sealing of joints and service penetrations for up to 4 hours FRL when tested to AS 1530: Part 4, AS 4072: Part 1 and BS 476: Part 20. It bonds to dust free masonry, concrete, calcium silicate board, plasterboard, metal and cable coverings and remains flexible after curing to accommodate thermal movement.



Kitchen Hood Fire Suppression Systems :



In today's commercial kitchens, higher temperature cooking oils and high-efficiency, slow-cooling appliances such as deep-fat fryers have combined to make fire suppression more challenging than in years past. But the fact remains: the need to protect people and property from fire is crucial. And the systems more foodservice operations trust to do this? The R-102™ and PIRANHA® Fire Suppression Systems from ANSUL, the leading brand in commercial kitchen fire suppression.

The heart of ANSUL Restaurant Systems lies in their ability to quickly detect and suppress fires. ANSUL R-102™ and PIRANHA® systems use advanced extinguishing agents to ensure rapid flame knockdown and vapor securement. Cooling these high efficiency appliances after initial flame knockdown is critical to eliminating reflash and minimizing restaurant downtime.

ANSUL® INTRODUCED THE CONCEPT OF AUTOMATIC RESTAURANT FIRE SUPPRESSION IN 1962, AT A TIME WHEN KITCHEN FIRES WERE ONE OF THE GREATEST CAUSES OF RESTAURANT LOSS. SINCE THEN, ADVANCES IN ENGINEERING AND MATERIALS TECHNOLOGY HAVE HELPED MAKE ANSUL RESTAURANT FIRE SUPPRESSION SYSTEMS THE #1 FOODSERVICE FIRE PROTECTION SOLUTION IN THE WORLD.

ANSUL R-102™ FIRE SUPPRESSION SYSTEMS

ANSUL® R-102 Fire Suppression Systems discharge ANSULEX® Liquid Fire Suppressant, quickly knocking down flames and cooling hot surfaces, while generating a tough vapor securing blanket that helps prevent reflash. With a nearly neutral pH, ANSUL® R-102™ systems are exceptionally friendly to cooking equipment.

ANSUL® R-102 systems are offered in two basic designs: Appliance specific, in which nozzles are aimed at specific hazard areas of each appliance; and overlapping, where nozzles are arranged to overlap and provide a "fire-free zone" throughout a group of appliances. Depending on the kitchen line-up, ARDOR will design, and service a system that offers the ultimate protection for specific facilities.



ANSUL® PIRANHA® FIRE SUPPRESSION SYSTEMS

The only agent-plus-water fire suppression hybrid on the market today, ANSUL® PIRANHA® systems outperform all conventional single-agent systems on a number of fronts. ANSUL® PIRANHA® systems attack fire using the rapid flame knockdown and securing capabilities of PRX™ Liquid Fire Suppressant. Then, the superior cooling effects of water follow, quickly cooling the cooking media and further helping to prevent reflash.



In UL300 testing, the ANSUL® PIRANHA® system cooled hot grease 15 times faster than single-agent wet systems, required 60% less chemical agent, covered hazard areas better and provided a cost-effective means to protect the cooking equipment. ANSUL® PIRANHA® systems are also available with fully self-contained water units to simplify installation. The Self-Contained Water Supply offers three minutes of water discharge to help assure hot oils and greases remain well below re-ignition temperatures. ANSUL® PIRANHA® systems are available in various sizes that can be combined for multiple configurations to expand the suppression system coverage. Depending on your type of facility, ARDOR ANSUL® PIRANHA® distributor will design a system that offers you the ultimate in fire protection.



SAPPHIRE® Clean Agent Fire Suppression System

Using water as a fire suppressant in areas where electronics operate and irreplaceable, high-value assets are stored, could be as devastating as fire itself. The SAPPHIRE® Clean Agent System quickly suppresses fires and protects sensitive equipment without causing harm to people or the environment. The system is especially suited to suppress fires in areas where an electrically non-conductive medium is required, where electronic systems cannot be shut down in an emergency, where cleanup of other agents poses a problem, and in normally occupied areas that demand a non-toxic agent.

The SAPPHIRE® system uses 3M Novec 1230 fire protection fluid for total flooding applications. The clear, colorless agent has zero ozone depletion potential, an atmospheric lifetime of just five days, and a global warming potential of 1.0. The SAPPHIRE® system suppresses a fire before it can be fully engaged and once the fire is suppressed, Novec 1230 quickly evaporates without harming any valuable assets.

Automatic Fire Curtain System

Automatic Fire Curtain systems provides a longer period of fire resistance. They have been certified to various approve standards internationally. They are commonly used in situations where a longer period of protection is required, such as over lift doors or for protected lobbies.

Automatic Fire Curtain systems provide 240 minutes of continuous fire containment with a standard drop down system. Each curtain is suspended on a single barrel up to 6 meters wide and 8 meters high. Overlapping curtains are used to protect larger areas. Automatic Fire Curtains are slightly heavier and thicker as fire rating increase but are still much lighter and easier to install than roller shutters. The control panel can be linked to a fire alarm system to automatically deploy and stop the spread of fire and smoke.

Automatic Fire Curtain systems having up to 60 minutes fire resistance is the least expensive. The fire curtain will be automatically deployed and create a barrier against the spread of fire when the fire alarm system is triggered.

Automatic Fire Curtain systems having up to 60 minutes fire resistance is the simple, effective and aesthetically pleasing alternative for fire doors, shutters, partitions and sprinklers; it is the perfect solution to keep areas up to 6 meters wide and 8 meters high protected under a total gravity fail safe system, so even in the event of a total power failure the fire curtain will still operate smoothly.



OUR PATRONS



Mumbai HO.

Ardor Fire & Safety Systems, Rolex Shopping Centre, Office no. Ext - B - 09, Station Road, Goregaon West, Mumbai 400 062 Maharashtra INDIA, Tel. +91-22- 6127 6161 - Fax. +91-22- 6127 6060

E-mail : info@ardorfire.com, URL : www.ardorfire.com

Mumbai Factory

J - 7 Krishna Complex, Near Gupta Compound, At Village - Val, Taluka- Bhiwandi, Dist - Thane 421302, Tel No. : 02522 - 656060, Factory@ardorfire.com

Ahmadabad Factory

C/O. Prakash Pipe Ind., Shed no.3 Plot No.103, Odhav. G I D C .Odhav road, Opp. Honda Show Room, Near Chotalal in Chali Odhav, Ahmadabad - 382415, Gujrat, India. ardorfiregujrat@gmail.com