

TimeLine ERP Business System

A Functional Overview

TimeLine ERP Business System

- **TimeLine** ERP Business Systems is already a well established name in Germany & Europe
- Backed up by the experience of 40 years
- 1400 Installations all over Europe
- Winner of Awards in SME ERP, in many segments & many categories, almost every year since 2008
- Branches in Germany, Romania, Bulgaria, Slovakia, Poland & India

TimeLine ERP

TimeLine [Demoversion] - [Main selection]

Program Favorites Window Help

TimeLine V11
Enterprise

GSPM

Client DEMOVERSION
Serial no. DEMOVERSION
Version 11.000.000
User DBA / Rupesh Shah
DMS Offline

TimeLine®

Master Data

- Customer Master (SK)
- Suppliers master (SL)
- Prospect master (SI)
- Misc. Addresses (SD)
- Item master (SA)
- Technical Item Master (SAT)
- Alloy Master (SLS)
- Price & MSR Management
 - Alloy contracts (GSLK)
 - Price Mgt. - Foundries (GSPM)
 - Additional Charges (ZSL)
 - Price adjustments (SPM)
- Basics
- System
- Purchase**
- Sales**
- Warehouse & Logistic**
- Production**
- Tool & Moulds**
- Quality Check**
- Central info**
- Options**

Workflow

No.	Consignor	Date	Subject	Text
7	DBA	28/01/2011	Deadline-/Quantity modification	Date modification from 18.11.2010 to 03.12.2010 at ProDoc 25 .Bitte prüfen Sie, ob diese Änderung
6	DBA	28/01/2011	Deadline-/Quantity modification	Quantity modification from 35 to 350 at SO 97004.10Bitte prüfen Sie, ob diese Änderung Auswirku
5	DBA	28/01/2011	Deadline-/Quantity modification	Quantity modification from 35 to 350 at SO 97004.10Bitte prüfen Sie, ob diese Änderung Auswirku
4	DBA	28/01/2011	Deadline-/Quantity modification	Quantity modification from 25 to 250 at SO 97017.10Bitte prüfen Sie, ob diese Änderung Auswirku
3	DBA	28/01/2011	Deadline-/Quantity modification	Quantity modification from 10 to 250 at SO 97018.10Bitte prüfen Sie, ob diese Änderung Auswirku
2	DBA	28/01/2011	Deadline-/Quantity modification	Quantity modification from 25 to 250 at PO 6 .Bitte prüfen Sie, ob diese Änderung Auswirkungen a
1	DBA	28/01/2011	Deadline-/Quantity modification	Quantity modification from 25 to 26 at PO 12 .Bitte prüfen Sie, ob diese Änderung Auswirkungen a

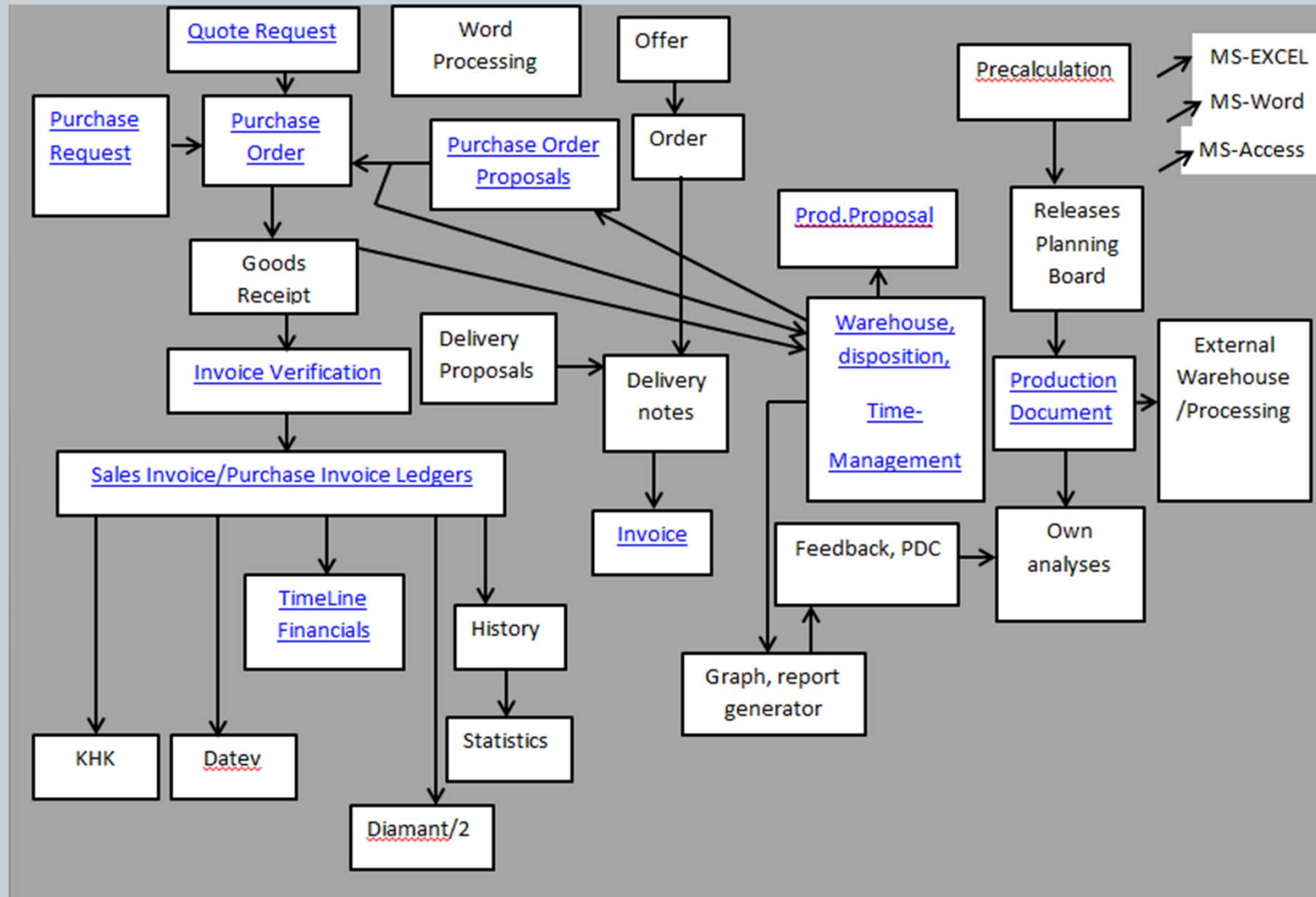
Ready 06.Feb.2011 23:52 11:52

Hardware Requirement:

Entry Level Servers Or High End PC with the below requirements:

Component	Minimum Requirement	Recommended
Processor	1.4 GHz	2 GHz or faster
Memory	2 GB	4 GB or Higher
System Diskspace	1 GB	2 GB or Higher
Diskspace For Database	2 GB	4 GB or Higher
Display	1366 x 768 or Above	1440 x 900
LAN Connectivity	100 mbps	1000 mbps

TimeLine ERP: Process Chart



Our Users in India

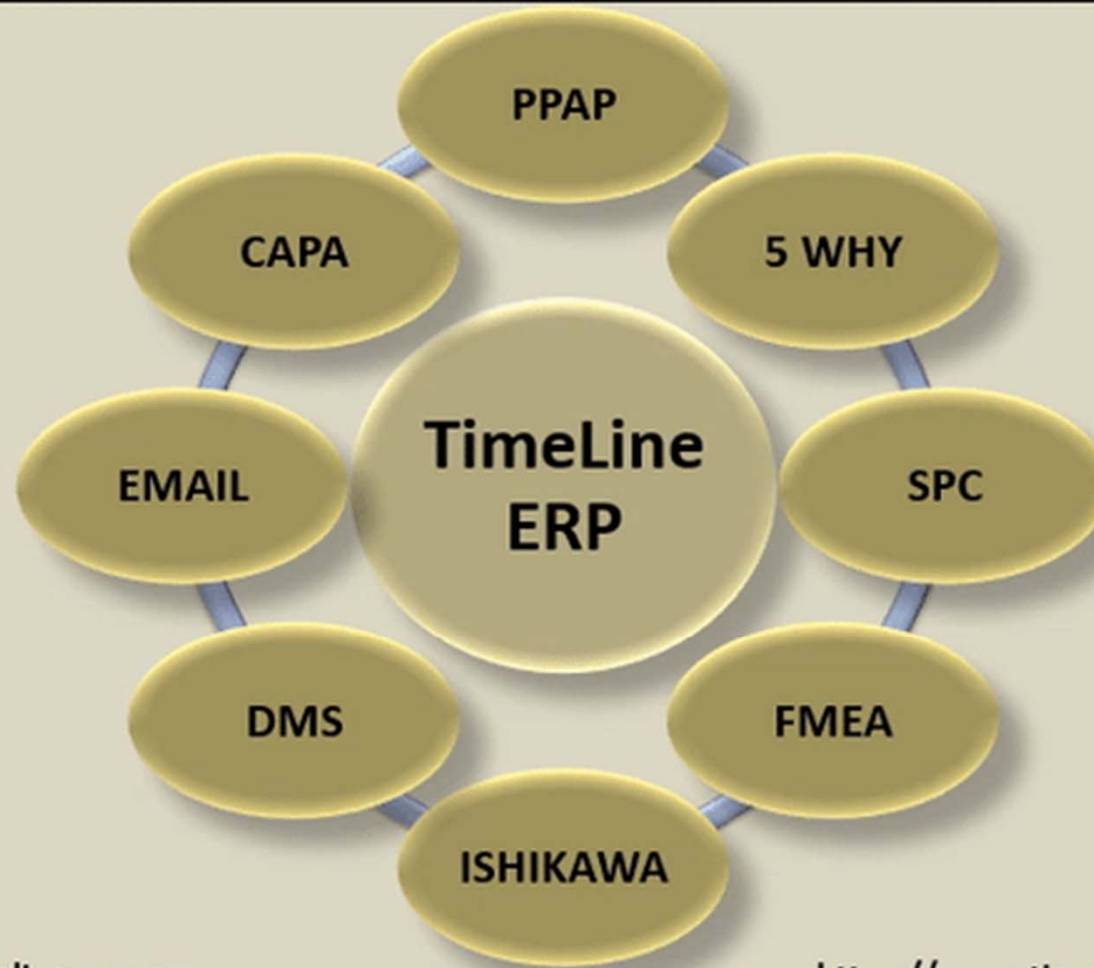
Sr.	Company	Concern Person	Comment
1	Gtek Corporation P Ltd Vadodara	Pritesh Patel 9737289111 / 9265242180	<ul style="list-style-type: none"> Using since 7 years Manufacturer of Temperature controller Electronic Assembly Unit
2	Goel Scientific Ltd Vadodara	Ravi Agarwal 9924200897	<ul style="list-style-type: none"> Using since 7 years, Because of some unavoidable circumstances on their side, stopped using since approximately 1 year
3	Gujarat PlugIN Devices P Ltd Vadodara	Ali Bhai 9898159295	<ul style="list-style-type: none"> Using since 6 years Manufacturer of Transformer
4	Sheffield Technoplast P Ltd Manjusr	Niketani Patel 9909984580 / 924422664	<ul style="list-style-type: none"> Using since 5 years or so Manufacturer of Engineering & Plastic Parts
5	Flucon Enterprise P Ltd Mumbai	Dylan Dsouza 9323318780	<ul style="list-style-type: none"> Using since 4 years or so Engineering & Plastic Parts
6	Taural India Pune	Ramdas Dhole	<ul style="list-style-type: none"> Implementation; Going on Foundry Trial Run
7	Sri Kripa Stones & Granites Pvtg Ltd Gaurgaon	Atul Vij 98184 27043	Implementation; Going on Stone Manufacturers

Rare & Higher End USP

- Can Support: Both Pull & Push System
- Resource Utilization
- Plant Utilization
- Scrap – Block Management
- Statistic Product Control (SPC) Analysis
- FMEA
- PPAP
- Ishikava
- APQP
- DMS with OCR
- Integration with QDAS
- Optimization of Resources, Assemblies & Raw Material
- Associate CAD drawing with BOM
- EDI
- Master Data import from MS Excel

Rare & Higher End USP

Only ERP With Features Like



info@timelineerp.com

<https://www.timelineerp.com>

Scenario

- **Serial, Batch & Process Batch**
- **Multiple Shift Plan**
- **Multiple Warehouse Management With Location(s)**
- **Dispatch Planning**
- **Screen Editor**
- **Customizable Menu**
- **Supplier reminders**
- **Supplier Evaluation**
- **Comparison of Quotation**
- **User Master & User Privileges Management**
- **Design Reports at your own**

Customer / Supplier / Prospect Master

- Multiple Addresses
- Multiple Concern Persons
- Can assign Price List(s)
- Related to Sales Representative
- DMS
- Can assign Item Specific drawing

Item Master

TimeLine [DEMO] - [Item master - MOUSE STD - MATCH CODE MOUSE STD]

item Favorites Window Help

Master data Prices Personal conditions Texts Routing Parts list Additions Stock locations Item characteristics Life cycle ESC

RoutgPlan (Std) Standard APL
Created 23.10.10/DBA
modified 13.01.11/DBA

RoutgEditor Copy from

Pos	Type	Routing cat. no	Title 1	Title 2	TR	TE	/Piece	TF	Cycle time	tesstime per qua	Program ID	Prod-MstoneID
10	Normal	AS-01	Assembly - I		0.00	10.00	1	0				ALLGEMEIN
20	Normal	FIN-M	Final - Touch	Final - Touch	1.00	2.50	1	0				ALLGEMEIN

Operation Seq

outing no. 10 Type Normal
Cat. ID AS-01
Text Assembly - Primary Level
Double click for long text
Progr ID
Process charge-Type PP3Profile 0

OS_Data

TR 0.00 TE
TE 10.00 TE
/Piece 1
Std. cycle time Days
time per quantity
Weight Kg
Overlapping 0.00 %
Lot size 0
TF 0 Days
CavFactor 1
IncWageMode no chord

Res. ID	R	DS	Matchcode	quantit	mType	e shar
WORK			WORK-1-SeniorW	1 Days		100

Bezeichnung (Artikelstamm) 07.Feb.2011 00:32

Windows taskbar: Favorites 12:32

Item master

- Rejects Probability
- Drawing Management with a history of revision
- Process Drawing
- Multiple ways to produce one Item: Multiple Routing Plan in relation with
 - **Processes , BOM , Inspection Plan**
- Item – Customer: Drawing – Price – Packing
- **Alternate Resources, BOM, Packing**
- Life Cycle

Resource Master & Management

The screenshot displays the SAP Resource Master Management interface. The main window is titled 'TimeLine [Demoversion] - [Item master - MOUSE STD - MOUSE STD]'. The 'Resource master' dialog box is open, showing the following details:

- ID:** WORK-1 (Machine selected)
- Title:** Senior Worker
- Description:** This Resource is designed Keeping (Doubleclick Our Senior Most Worker for long text) Mr. Pratap Solanki in Reference
- Matchcode:** WORK-1 - Senior Worker
- Feedback code:** Automatic
- Res. group:** (empty)
- WFL-Status:** (empty)
- counting cost center:** Number 1
- Resource-Status:** Ready
- Planning flag:** Towards Infinite (selected)
- Planning type:** Normal (selected)
- Shop calendar:** 001-CAL Calendar 20
- Usage rate:** 100.00 %
- HoldingTime:** Days

The background window shows a table with columns 'Pos', 'Type', and 'AS-'. The table contains the following data:

Pos	Type	AS-
10	Normal	AS-
20	Normal	AS-
30	Normal	POL
40	Normal	MO

The SAP taskbar at the bottom shows the date '07.Feb.2011 00:00' and the time '12:00'.

Resource Master – 3M Management

- **Machines, Employees, Tools, Moulds, External Mfgr can be managed as resources**
- **Resource Capacities in terms of Time**
- **Resource charges in terms of Time, Piece, Kg, Fix & May be free**
- **Setup & Execution time for each Resource for a specific Process**
- **Maintenance of Machines, Tools**
- **Calibration Management of Inspection Equipments**

Sales - Purchase

- **Sales & Purchase Call**
- **Receipt & Delivery Schedule**
- **With Material Requirement Planning Support**
- **With EDI: Electronic Data Interface Support**
- **Provision of Record a Sales Order only for followup assigning a 'No MRP' WareHouse**

Material Requirement Planning (MRP)

TimeLine [Demoverion] - [MRP (Material Requirements Planning)]

Proposals Favorites Window Help

Overview BE Purch. order BA Production order Continuous run Surplus ESC

Options

Session Nbr [dropdown]
 Date 11/01/2011
 Empl. RSD

SupplierProposal Main Supplier
 PartListResolution Yes

Several Warehouses Summarize
 deterministic
 stochastic

Filter

Item type
 Purchase parts
 In-house prod. parts

Product group
 All
 Group

Parts Classification
 All
 CompCateg

Warehouse
 All
 Warehouse
 Stock info

Sorting criterion
 All
 Sorting criterion

Employee
 All
 Employee

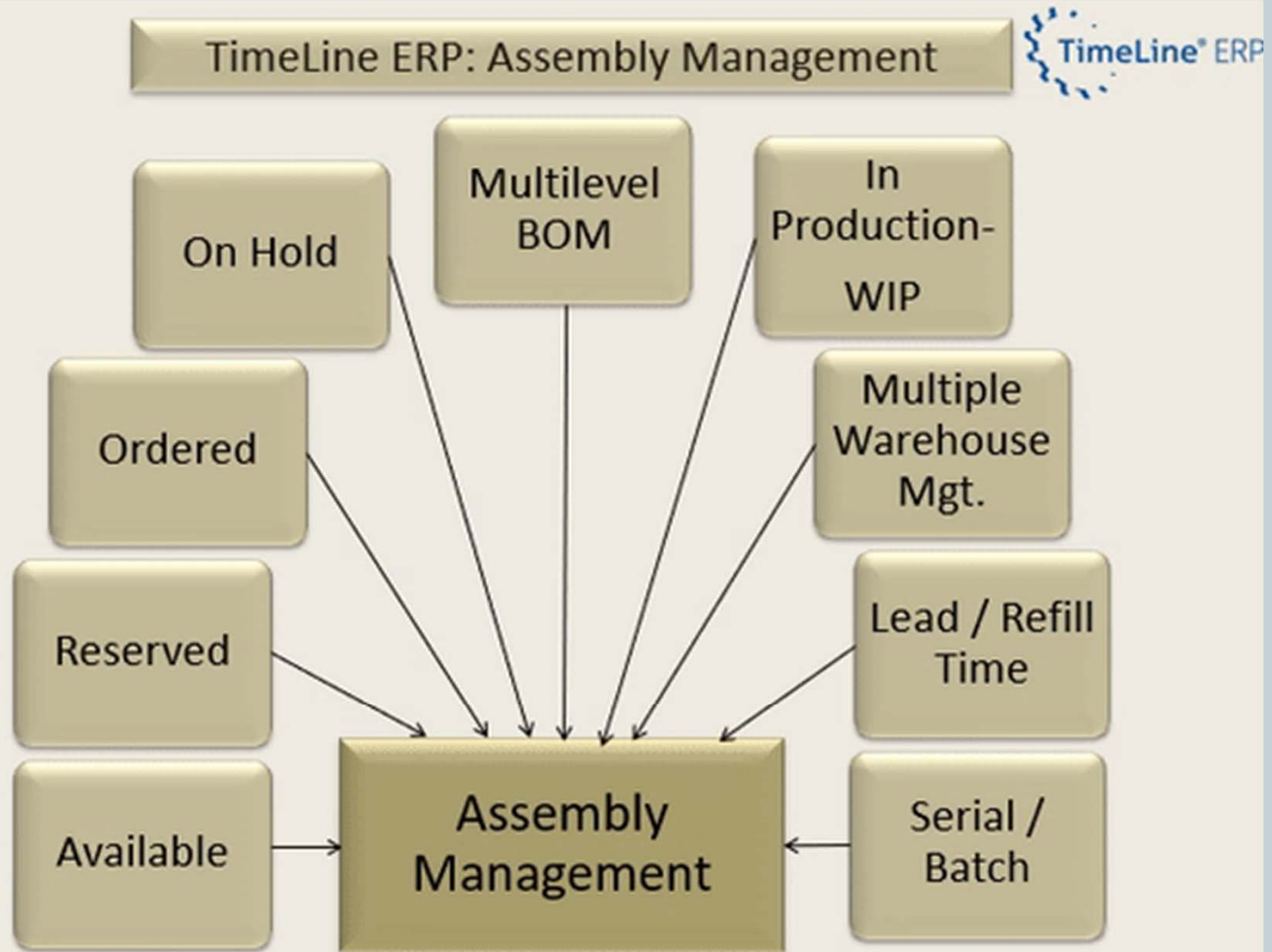
Release Date
 All
 until expiration date

Project
 All
 Project

Item	Matchcode	ProposalQty	Stock	Release Date	Supplier	Matchcode	PurchContract
226	AL 226	2418.8	-100	27/10/2010			
A1.1	A1.1	2205	0	21/11/2010			
A1.2	A1.2	2940	0	21/11/2010			
A2.1	A2.1	8940	0	21/11/2010			
A2.2	A2.2	12516	0	21/11/2010			
B1	B1	400	0	22/11/2010			
B1.1	B1.1	800	0	22/11/2010	70002 SATGURU DIST.; BHC		
B1.2	B1.2	1200	0	22/11/2010	70013 EXT RESOURCE;		
B2	B2	400	0	22/11/2010			
B2.1	B2.1	800	0	22/11/2010			
B2.2	B2.2	1200	0	22/11/2010			
B3.3	B3.3	600	0	22/11/2010	70010 BABU ENGINEERING		
CAPACITOR 0.1UF 50V Digikey PCC18401 CT-ND							
GEAR BOX - L	GEAR BOX LEFT PART	20	0	22/11/2010			
GEAR BOX - R	GEAR BOX RIGHT PART	20	0	22/11/2010			
GEAR-01	GEAR BOX - 2.5 CMS BOLT	100	0	22/11/2010			
GEAR-02	GEAR BOX	100	0	22/11/2010			
GEAR-SHAFT	GEAR SHAFT	10	0	22/11/2010			
IC - 105#- 0707	FOR 0707 SERIES MOTHE	275	0	17/01/2011			
IC - 2610	IC ADNS-2610	295	0	17/01/2011			
MO-BAG	MOUSE PLASTIC PACKING	295	0	17/01/2011			
MO-BOX	A PACKING ITEM	295	0	17/01/2011			
MO-CABLE-1.5	MOUSE-CABLE 1.5	250	0	17/01/2011			
MO-RB	MOUSE-R	275	0	17/01/2011			
MO-WHL	MOUSE-WHEEL	275	0	17/01/2011			
RESIS 250 OHM	RESISTOR 250 OHM PHILI	885	0	17/01/2011			
RESIS-100 OHMS	RESISTOR 100 OHMS	1475	0	17/01/2011			
TR-AEDS-9310	TRANSISTOR - AEDS-9310	1000	0	17/01/2011			

MSR-Adjustment 06.Feb.2011 23:57

Material Requirement Planning (MRP)



Material Requirement Planning (MRP)

- **Generate Proposed Quantity to To Process/ Purchase**
- **Segregating**
 - Sales Order Received
 - Purchase Requisition
- **Proposed Quantity Generated Considering:**
 - Inventory
 - Replacement Time
 - Minimum – Maximum Stock
- **Surplus Assessment**
- **Optimization of Assemblies & Raw Material**

BOM Sample Tree

TimeLine [DEMO] - [Item master - M1 - M1]

item Favorites Window Help

Master data

Item parts list M1

Parts list display Where-used list Parts list comparison

Print Save ESC

Main item

Item no. M1
Title RoutgPlan (Std) Standard APL

Display options

M1

- 2 - M2
- 3 - M3
- 4 - M4
- 5 - M5
- 6 - M6
- 7 - M7
- 8 - M8
- 9 - M9
- 10 - M10
- 11 - M11

Parts list pos

list pos 10 Type Normal

Item no. M2
CAD - Impo Item 12

Quantity x length x width

quantity 2

Debit on routing

Warehouse

Status Active Inactive

Comment

Pos	Item	Title	quantity
10 M3	CAD - Impo Item 12		3

Jumps to parts list information module

07.Feb.2011.00:31

12:31

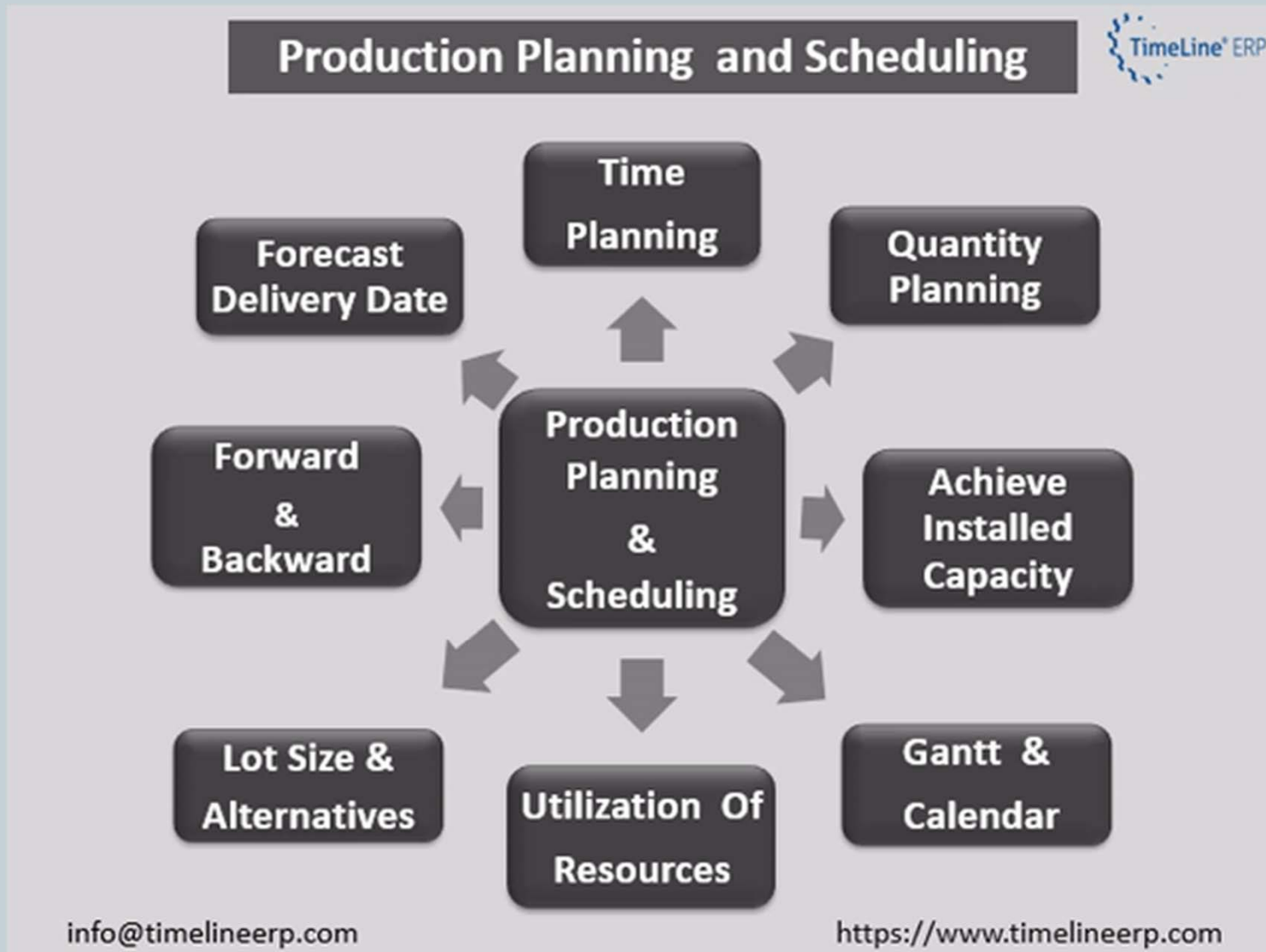
Calculation - Costing

- Calculation of Existing Item or New
- Calculation of a Production Order
- Derive Cost using: Last- Highest– Lowest- Average- Basic Pur Cost
- Material + Process + Surcharges + Fix Cost(s)
- Quantity Variants
- Save Costing Made
- Compare: Theory Vs Actual Production Costing

Production

- **Production Order**
 - **Multilevel Production Order for Assemblies**
 - **Rework Order**
 - **Coupled / Family Item Production Order**
 - **Consolidated Production Order**
 - **Temporary Production Order to estimate delivery date from Sales Order**
- **External Manufacturing Orders**
- **With Multiple Routing Plan**
- **Modify Routing, BOM Or Resource(s) without disturbing Item Master**
- **Planning Priority Group**
- **Assign Workshop / Warehouse**

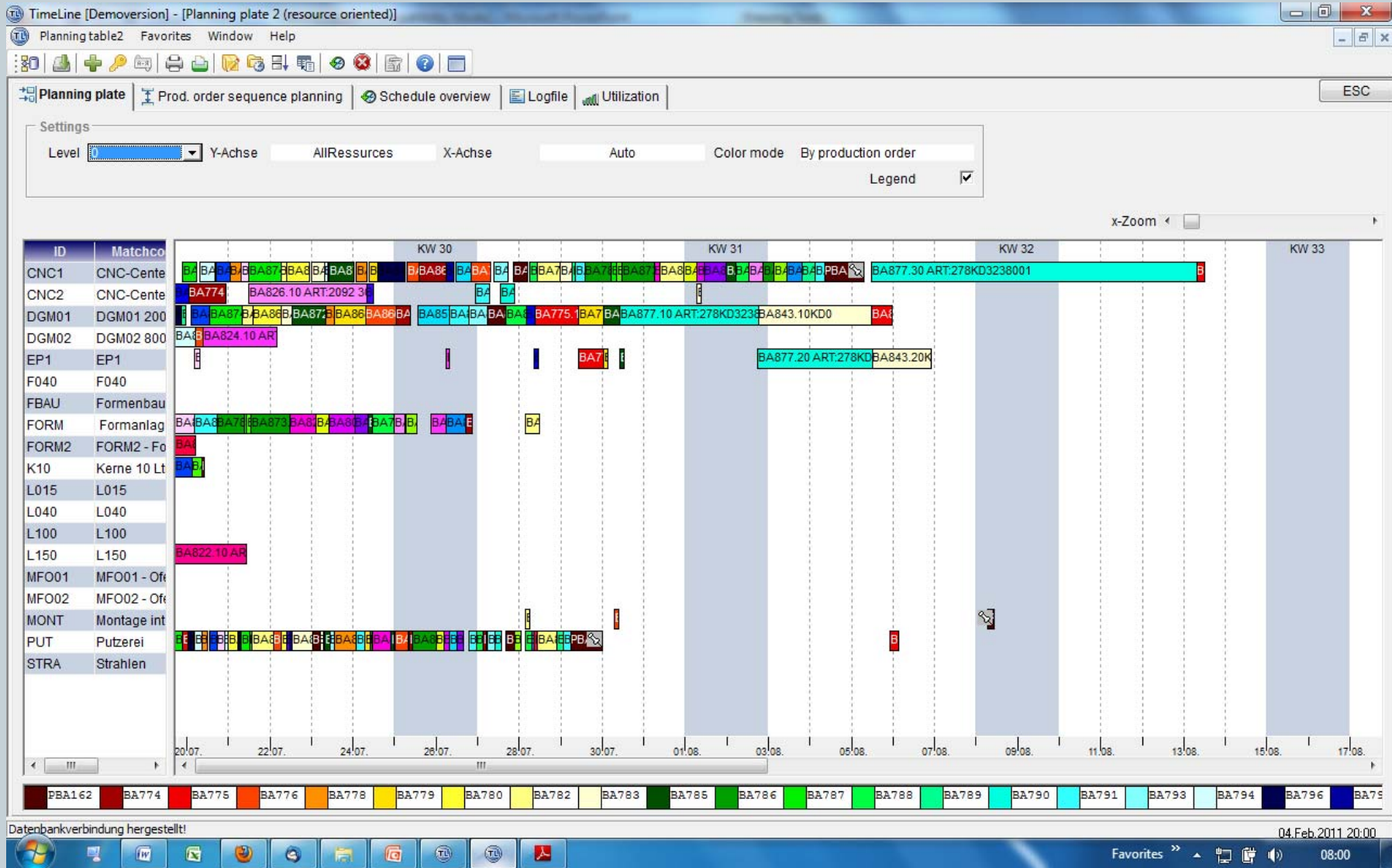
Production Planning



Production Planning

- **Production Scheduling - Planning**
 - Forward – Backward Planning
 - Time & Capacity Planning
 - Facilitate to achieve Just In Time
 - Kanban
 - Prioritize a specific Production Order
 - Re-Scheduling
 - Plan Capacity over a set of Alternate Resources
 - Overlapping of processes
 - Help to achieve Optimized Utilization of Resources

Production Planning



Feedback

- **Daily Production**
- **Alter Resource, Workers, Consumption, Per Piece Rate for Contract Labors – on Real Time basis**
- **Reasons for Scrap & Block**
- **Ways to record Production**
 - **Manual**
 - **Barcode Scanners**
 - **Kiosk Handled**
 - **Machine Integration (No human intervention)**
 - **Mobile / Tab**

Project Planning



Project Management:

Integration of Bunch of Orders

Project Explorer facilitate:

Power of Integration & drilling down:

- Orders
- Drawings
- Documents
- Bill Of Material

All Under One Roof:

- Purchasing Documents
- Production Orders
- Emails

Planning With:

- Task,
- Workflow
- Calendar Association

Define Mile Stones with:

- Time Frame
- Budget
- Theory
- Actual

Email Association

Costing & Budget Tracking

Service Orders

External Orders

Batch Tracking

For the first time in ERP:

- TimeLine offers plug-ins for:
 - Autodesk Inventor
 - Solid Edge
 - Solid works
 - to merge the CAD and ERP worlds.

Project Planning

- **Project Planning**
- **Based : APQP (Advance Product Quality Planning)**
 - Activity related to Organization (New Model, An Event)
 - Milestones (Scope Design, Feasibility, Assembly, Testing ..)
 - Milestone Status (Started, In Process, Late, Finished..)
 - Milestone Budgeting
 - Milestone time scheduling

DMS: Document Management System & Email Management

in Association with CRM

- **Document Management System**
 - Each document is equipped with DMS
 - Digitalization of Business & Production Flow to achieve Paper Less Office
 - With OCR Support
- **Email Management (With Incoming Mails)**
- **Both in a integration with CRM**
- **View all mails of a BP in one single Screen**

Warehouse Master

- **Multi Warehouse management**
- **Storage Location**
- **Accessibility by Material Req. Planning**
- **Negative stock allowed or not**
- **Optional blocking of warehouse transactions, while inventory is in progress**
- **Batch & Serial Item management**
- **FIFO Management**
- **Serial / Batch Number Management**

Quality Check

TimeLine [Demoversion] - [QMOrder]

Testing orders Favorites Window Help

ESC

Pos	Feature	TstRssID	Title 1	Pos	SampleFreq	SampleQty	Status	Result	Cavity	Samples Type	SamplgMeth	Refe
10	DIMEN-001	G-100	Dimension	10 - Nuclei shoot L1	10	5	erfasst		<input type="checkbox"/>	Static		Line Item
20	VIS-INSP-0		Visual inspection	10 - Nuclei shoot L1	10	5	erfasst		<input type="checkbox"/>	Static		Line Item
30	CHEM-SP		Chemical Analysis - SpectroLab	10 - Nuclei shoot L1			erfasst		<input type="checkbox"/>	Static		Line Item

Pos 10

Feature DIMEN-001 Check Len or Width

Pos 10 - Nuclei shoot L1
Nuclei shoot L1

Title Dimension
Mach - G-100

DescrPlain

Sample type

Static
 dynamic

SampleType Quantity
 Time interval

SampleFreq 10
SampleQty 5

Stempelmaß
Status erfasst

Reference sample Line Item / Prod. O
 Cavity Separation

tolerances

LowerLimit	LowerTolerance	Target value	UpperTolerance	UpperLimit
50.000	125.000	175.000	180.000	225.000

50.000 - 125.000 | 175.000 | 180.000 - 225.000 - 50.000

Enter tolerance limits

Limitation Both Sided
MeasUnit mm

Ready 06.Feb.2011 23:38

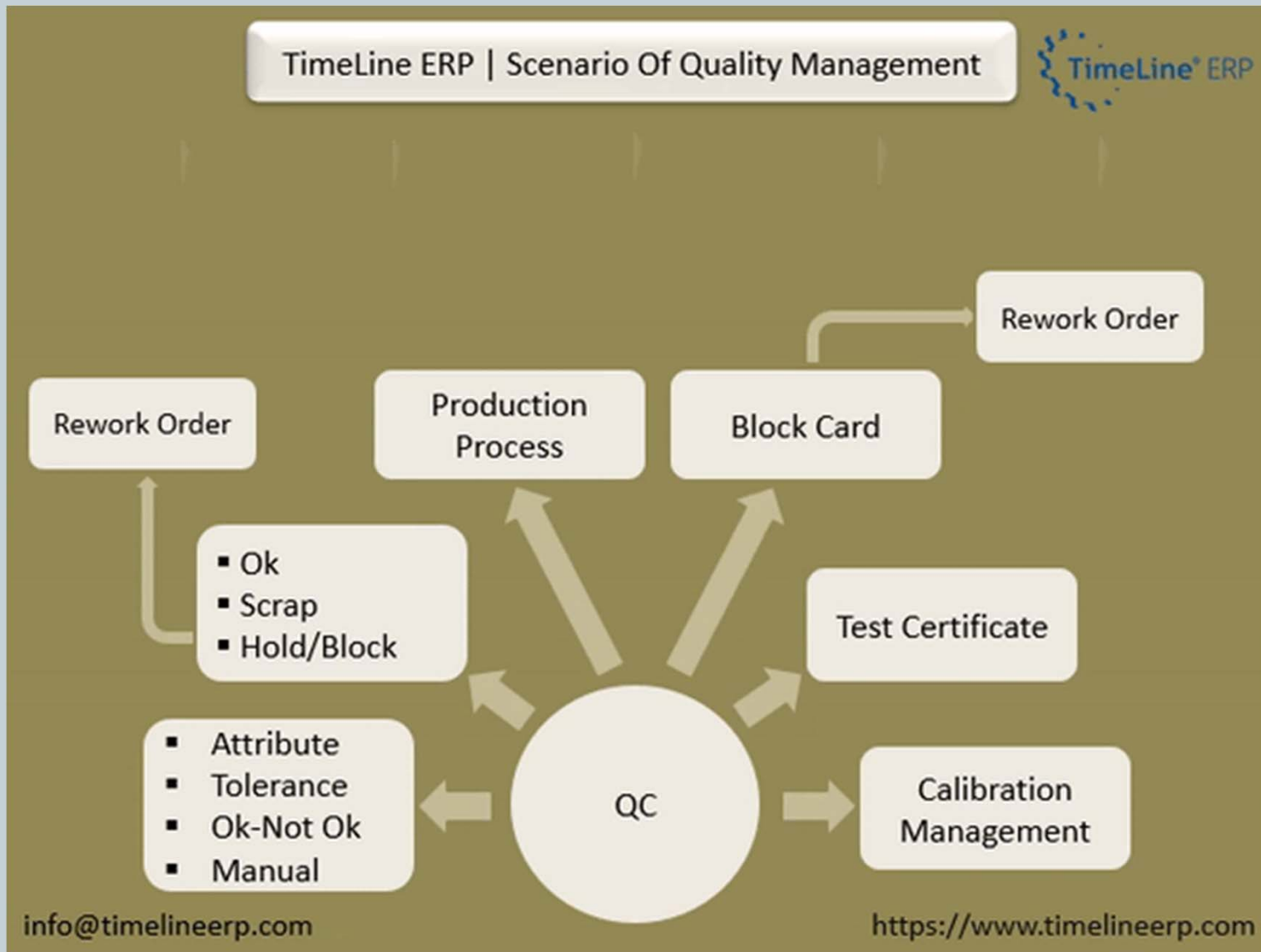
11:38

Control Chart



Quality Check

TimeLine ERP | Scenario Of Quality Management



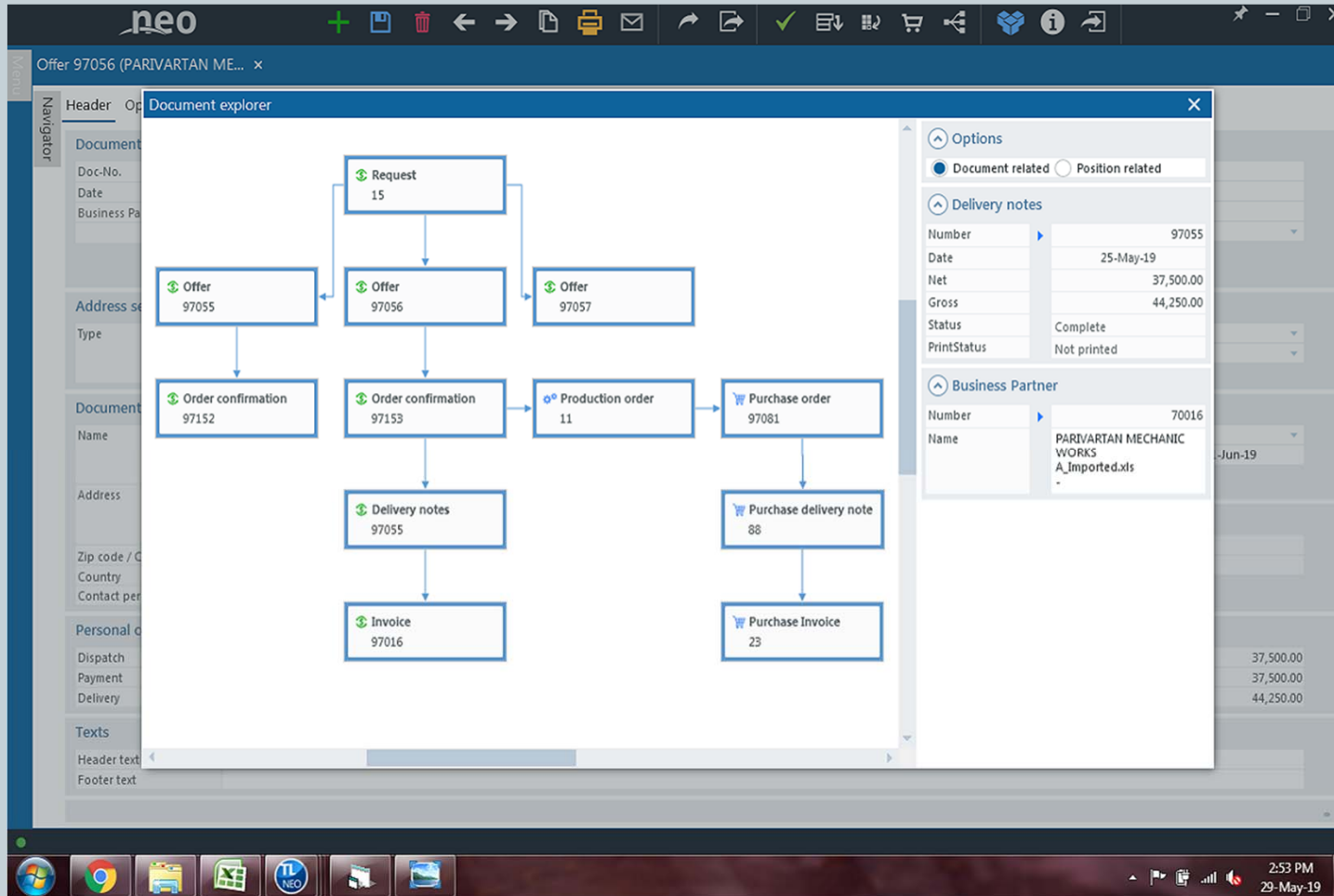
Quality Check

- **Quality Check for Items to be Produced & Purchased**
- **Prod Step can be assign to a Test Order**
- **Measurement & SPC Inspection Orders**
- **Control Chart**
- **Four different types to perform a Quality Check**
- **Tolerance / Limits**
- **Sample Frequency Vs. Sample Quantity**
- **Calibration Management of Inspection Equipment**

Claims Management

- Can be used to resolve issues related to flow / production
- Monetary Part might exist or not
- Can be of 3 types
 - Customer Claims
 - Supplier Claims
 - Internal Claims
- Action taken to resolve claim
- Estimation of claim
- Actual cost incurred

Document Flow



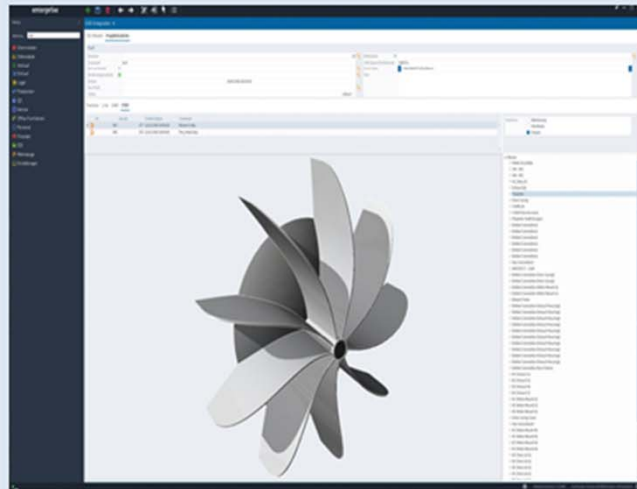
CAD Integration

First Time Plugins to Merge CAD into ERP World

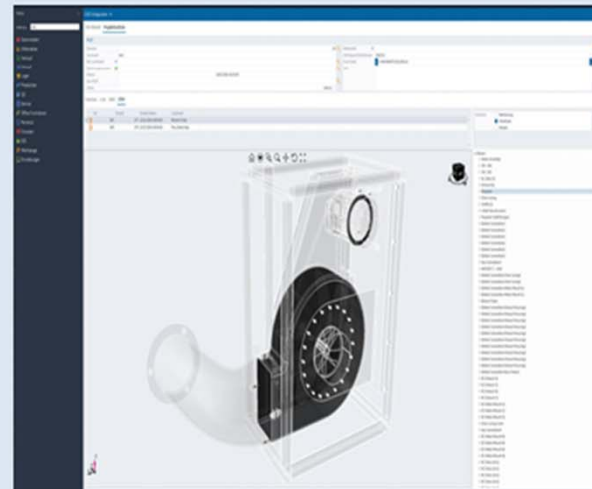


CAD Plugins

For the First time, TimeLine Offers Plug-ins for Autodesk Inventor, Solid Edge and Solid works to merge the CAD and ERP Worlds. Once Setup, You can edit TimeLine article and metadata from the CAD environment.

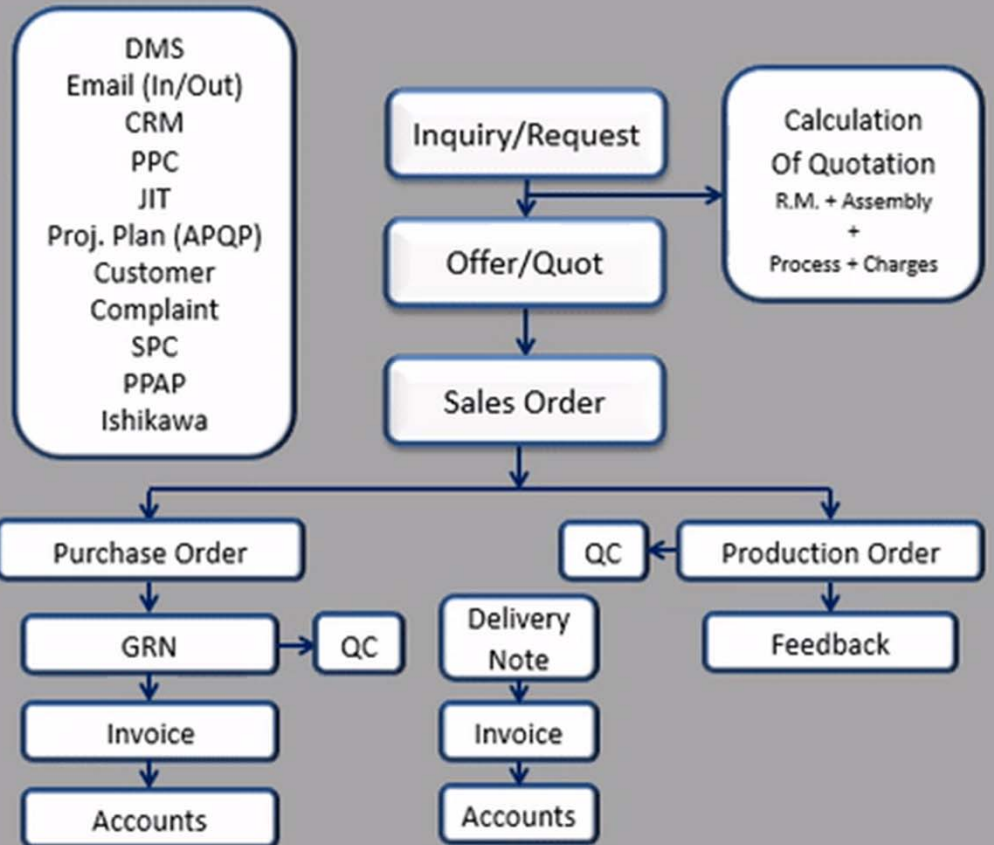


info@timelineerp.com



<https://www.timelineerp.com>

Process Flow



Return of Investment

